

Gold signature



 MONITOR AUDIO®

design that makes the difference

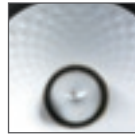


Introduction

Monitor Audio can take you from the loudest explosion to the softest whisper in a heartbeat, deliver passion with precision and connect you directly to music's emotional heart. We believe you should never settle for a contrived image when you can have absolute, true-to-life clarity. Nor should you settle for cutting-edge technical innovation without meticulous craftsmanship. Which is why Monitor Audio is synonymous with material and sonic excellence around the world. Even so, we've never made a loudspeaker as good as this. With over 30 years' experience at raising the bar for the world's most demanding consumers, Monitor Audio introduces Gold Signature, a new flagship range that reaches unprecedented standards of design, innovation, performance, technical excellence, build quality and value in its class.

Key features

New drivers



Monitor Audio's ground-breaking 'dimpled' RST® (Rigid Surface Technology) cone profile is further refined with Finite Element Analysis to provide smoother response and reduced break-up. The C-CAM® (Ceramic Coated Aluminium/Magnesium) material employed by the renowned Monitor Audio gold dome tweeter is an innovative alloy originally developed by the aerospace industry for jet engine design. The C-CAM® tweeter devised for GS will remain rigid and operate more like a pure piston up to 43kHz. High frequency performance is propelled to another level.

Attention to detail



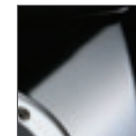
New die-cast alloy cable terminal panels are located low down on the GS20 and GS60 for easy access and neater cable runs. The proprietary HiVe™2 reflex port is designed to reduce turbulence and increase the speed of the air-flow through the port, resulting in faster, cleaner bass attack.

Anti-resonance build



The cast aluminium GS drive unit chassis are held rigidly in place by clamp plates made from a low-resonance combination of die-cast aluminium and zinc. All the components provide a high degree of resonance cancellation and damping. We've employed the time-honoured quality of traditional tongue-and-groove jointing to provide a cabinet construction, which is inherently strong and rigid, enhanced by extensive vertical and radial internal bracing.

New look



Smooth, radiussed edges and selected premium quality finishes on all surfaces give the GS range a sumptuous yet strikingly clean and modern appearance. GS20 and GS60 feature a rigid cast-aluminium plinth with a discreet aerofoil profile and easy-to-adjust integral machined metal spikes/feet.



GS10

The GS10 re-writes the book on compact monitor performance, easily eclipsing the dazzling standard set by its predecessor, the GR10. It may be small, but the GS10 showcases the multiple talents that make the Gold Signature series so remarkable. With its advanced, low-resonance drivers, rigid build and contoured cabinet edges, the GS10 re-defines accurate, low-colouration sound in a compact, stylish stand-mount and bookshelf speaker. Using the new, low distortion 6 1/2-inch RST®2 bass/mid driver and gold C-CAM® tweeter developed especially for the GS series, the GS10 is capable of true 3-D imaging and tonal accuracy.

To keep the GS10 and GS-LCR looking and performing at their best, a beautifully engineered stand is available, having the same die-cast alloy footprint as a GS20. The solid, stable speaker platform has integral rubber contact points for improved isolation and a discreet cable management system ensures that trailing cables remain out of sight. Slim and elegant, the GS stand will maximise the considerable sonic and aesthetic virtues of these GS designs.





GS20

The massively accomplished GR20 was a hard act to follow, but its successor, the GS20, pulls decisively ahead in all respects, combining gorgeous aesthetics, sublime sonics and superlative build quality. Its two-and-a-half way, three driver configuration is built around a unique dual-cavity cabinet design, in which the 6 1/2-inch RST®2 bass and bass/mid drivers work into separate enclosures, tuned to different frequencies and impedances. This provides improved power handling and delivers faster, deeper, more dynamic bass and greater transparency through the crucial mid-range. Above that, the gold C-CAM® tweeter ensures a smooth, detailed sound all the way up to 43 kHz, exploiting the full potential of the latest wide-bandwidth digital formats.





GS6o

The elegantly proportioned GS6o embodies all the conviction and integrity of Monitor Audio design. Its thirty year heritage is eloquently expressed by a compelling unity of cutting-edge innovation and aesthetic creativity bringing life-like power, dynamics and realism to music and film. Like all models in the Gold Signature range, the flagship GS6o is a monument to the cabinet-maker's art. Immaculate real wood or piano gloss finishes are blended with a slender, contemporary design and superb attention to detail, investing the GS6o with an air of resolute quality.





Complete solutions

The best A/V speaker systems demand exceptional performance from every component. The strength of Gold Signature's design and engineering makes it easy to assemble a high quality five or seven-channel loudspeaker system that's perfect for any room. Sharing driver, crossover and cabinet technologies, the GS speakers will provide exceptional tonal accuracy, transparency and wide-bandwidth response in any combination, transcending the experience of sound through two channels to generate a tangible sense of 'being there'.

GS-FX



The GS-FX is a completely new design from Monitor Audio. Its advanced dual-mode configuration can be switched automatically by a processor to accommodate a range of surround sound applications. The speaker's slim-profiled angled baffle design incorporates no fewer than three driver pairs. When used in monopole mode to reproduce discrete side or rear channels, its front-firing 6 1/2-inch RST®2 bass/mid driver and gold C-CAM® tweeter come into play, delivering an accurate wide-bandwidth sound-field to complement perfectly a front-channel GS speaker combination. The GS-FX in dipole mode uses two side-firing pairings of 4-inch C-CAM® bass/mid driver and gold C-CAM® tweeter combined with the tailored output from the front-firing bass/mid driver to provide wonderfully diffuse yet tonally precise surround effects.

GS-LCR



Amazing as it may seem, a centre speaker may be required to reproduce over 60% of the entire output of a film sound-track. This means that it must deliver the dramatic impact of explosions and sound effects as precisely as it recreates the many tonal subtleties of dialogue. The outstanding dynamic reach and generous power handling of the Gold Signature LCR speaker allow it to master the most dynamic drive conditions with ease and still have something in reserve. Monitor Audio has optimised the design to provide accuracy and control over a wide listening area while preserving the exact tonal signature and balance of the GS Series. This means that the GS-LCR will integrate perfectly with any of the speakers in the Gold Signature range.



GSW-12

The new GSW-12 subwoofer is bristling with features packed into a compact high-power enclosure. A new 1000 watt Class D power amplifier is coupled to a new ultra-long throw 12-inch C-CAM® driver, equipped with a massive 4-inch voice coil and a substantial (18kg) double-stack motor system. Inputs/outputs include a balanced XLR input, LFE input (RCA), L/R stereo inputs (RCA), L/R link Inputs (RCA) and a link output (RCA Slave). All inputs and outputs can be configured via the top-mounted control panel or remote to operate as direct links or have programmable filter settings. The control panel features a push/turn rotary encoder operation with variable phase, volume, low pass filter (independent input/output programmable), four EQ settings and input mode selection. Twelve-volt trigger, 9Pin D-connectors and an optional RF eye are provided for system control after custom installation. The GSW-12 is available in piano black finish or beautiful real wood veneers to match the GS range.



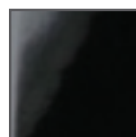
Gold Signature Specifications



Silver Lacquer
Finish



Walnut Real
Wood Veneer



Black Lacquer
Finish



Natural Oak Real
Wood Veneer



Santos Rosewood
Real Wood Veneer



Cherry Real Wood
Veneer

All Gold Series loudspeakers come with grilles and a choice of lacquer and real wood veneer finishes.

	Frequency Response	Sensitivity (1W@1m) (-6dB)	Nominal Impedance (ohms)	Maximum SPL (Per pair in room), dBA	Power Handling watts RMS	Recommended Amplifier Power Output. watts RMS	Bass Alignment	Tweeter Crossover Frequency kHz	Bass Crossover Frequency Hz	Drive Unit Complement	External Dimensions - Excluding Plinth H x W x D mm (inch)	External Dimensions - Including Plinth H x W x D mm (inch)	Weight kg (lb)
--	--------------------	----------------------------	--------------------------	-------------------------------------	--------------------------	---	----------------	---------------------------------	-----------------------------	-----------------------	--	--	----------------

GS10	40Hz – 43kHz	88	8	108	100	40 – 100	Rear Ported, Bass Reflex	2.7	N/A	1 x 6 ¹ / ₂ " RST®2 bass/mid-driver 1 x 1" gold dome C-CAM® tweeter	360 x 206 x 270 (14 3/16 x 8 1/8 x 10 5/8)	N/A	8.5 (18.7)
------	--------------	----	---	-----	-----	----------	--------------------------	-----	-----	--	---	-----	------------

GS20	32Hz – 43kHz	89	6	111	150	40 – 150	Dual Chamber Bass Reflex with Differential Tuning (HiVe™2 Technology)	2.7	250	1 x 6 ¹ / ₂ " RST®2 bass driver 1 x 6 ¹ / ₂ " RST®2 bass/mid driver 1 x 1" gold dome C-CAM® tweeter	924 x 206 x 280 (36 3/8 x 8 1/8 x 11)	934 x 322 x 363 (36 3/4 x 12 11/16 x 14 5/16)	20.6 (45.3)
------	--------------	----	---	-----	-----	----------	---	-----	-----	---	--	--	-------------

GS60	28Hz – 43kHz	90	6	113	200	60 – 200	Sealed Mid-Range Enclosure. Dual Chamber with Differential Tuning (HiVe™2 Technology)	2.7	150	2 x 6 ¹ / ₂ " RST®2 bass driver 1 x 6 ¹ / ₂ " RST®2 bass/mid driver 1 x 1" gold dome C-CAM® tweeter	1060 x 206 x 330 (41 3/4 x 8 1/8 x 13)	1070 x 322 x 403 (42 1/8 x 12 11/16 x 15 7/8)	27.1 (59.7)
------	--------------	----	---	-----	-----	----------	---	-----	-----	---	---	---	-------------

GS-LCR	40Hz – 43kHz	89	8	110	150	40 – 150	Sealed Enclosure	2.7	N/A	2 x 6 ¹ / ₂ " RST®2 bass/mid-driver 1 x 1" gold dome C-CAM® tweeter	206 x 560 x 270 (8 1/8 x 22 1/16 x 9 1/16")	N/A	12.5 (27.5)
--------	--------------	----	---	-----	-----	----------	------------------	-----	-----	--	--	-----	-------------

GS-FX	60Hz – 43kHz	86	6	106	100	40 – 100	Sealed Enclosure	2.7	N/A	1 x 6 ¹ / ₂ " RST®2 bass/mid monopole driver 1 x 1" gold dome C-CAM® tweeter 2 x 4" C-CAM mid di-pole driver 2 x 1" gold dome C-CAM® di-pole tweeter	310 x 390 x 160 (12 3/16 x 15 3/8 x 6 5/16)	N/A	11.5 (25.3)
-------	--------------	----	---	-----	-----	----------	------------------	-----	-----	---	--	-----	-------------

	Low Frequency Limit (-3db)	Upper Frequency Limit	Amplifier Output	Low Pass Filter	Input Impedance	Enclosure Specification	Mains Input Voltage	Drive Unit Complement
--	----------------------------	-----------------------	------------------	-----------------	-----------------	-------------------------	---------------------	-----------------------

GSW-12	18Hz	35-120Hz	1000 watts R.M.S (2000 watts peak) Class D	Active 4th Order	20k ohms	Sealed cabinet. 25mm (1") MDF construction with radial cross bracing	90-120 VAC 220-250 VAC	1 x 12" C-CAM® subwoofer driver featuring triple suspension and 4" long-throw voice coil. Vented chassis design.	390 x 390 x 420 (15 3/8 x 15 3/8 x 16 1/2)	405 x 390 x 462 (16 x 15 3/8 x 18)	T.B.C
--------	------	----------	--	------------------	----------	--	---------------------------	--	---	---------------------------------------	-------



www.goldsignature.co.uk

For details of your nearest Monitor Audio dealer visit our website at:

www.monitoraudio.co.uk

T. +44 (0) 800 0352 032

E. info@monitoraudio.co.uk

UK

www.monitoraudiousa.com

T. +1 905 428 2800

E. info@monitoraudio.com

USA